



## OPERATION & MAINTENANCE MANUAL



### TRADITIONAL COFFEE MACHINE AK/8-5



#### KIOSIDIS PRIVATE COMPANY P.C., COMMERCIAL BAR EQUIPMENT

16th km THESSALONIKI – SERRES, P.O. BOX 21,  
572 00 LITI, THESSALONIKI, GREECE

TEL.: (+30 23940) 73536 & 73537, FAX: (+30 23940) 73538

e-mail: [export@johny.gr](mailto:export@johny.gr), Web site: [www.johny.gr](http://www.johny.gr)



## Hovoli AK/8-5

---

This manual, assembly and maintenance  
is part of the study on the harmonization of  
Hovoli AK/8-5  
with the European Directives:

**2014/35/EC Low Voltage Directive (LVD)**

**2014/30/EC Directive on Electromagnetic Compatibility (EMC)**

**2015/863/EU Directive on the restriction of use of certain hazardous substances in electrical and electronic equipment (ROHS) amending 2011/65/EU**

This manual is an integral part of **hovoli AK/8-5** and should be available to anyone wanting to operate, maintain, repair or adjust its operation.

The manufacturer is not responsible for any problem that may occur due to improper or incorrect installation and maintenance. The hovoli should only be serviced by trained service technicians.

Written and published by the company



**JOHNY- KIOSIDIS PRIVATE COMPANY P.C.**

which is the manufacturing company.

For the publication the company worked together with:



**ROTSKOS ATHAN. & CO. CONSULTANT ENGINEERS**  
179 Al. Papanastasiou Str., ZIP 542 50 - Thessaloniki  
e-mail: [info@rotskos.gr](mailto:info@rotskos.gr), Web: [www.rotskos.gr](http://www.rotskos.gr)  
Tel.: +30 2310 32.00.94 & 2310 32.01.97  
Fax: +30 2310 30.20.84



You may find small differences between this manual and the appliance you have purchased. This is due to the continuous development of our products. If these differences cause any questions to arise, **contact** the manufacturer **promptly**.



## CONTENTS

<b>1. INTRODUCTION.....</b>	<b>4</b>
1.1 GENERAL .....	4
1.2 PRODUCTS .....	4
<b>2. SAFETY REGULATIONS AND GENERAL INSTRUCTIONS. GENERAL OBSERVATIONS.....</b>	<b>5</b>
<b>3. MARKING.....</b>	<b>5</b>
<b>4. SYMBOLS USED .....</b>	<b>6</b>
<b>5. GET TO KNOW THE APPLIANCE .....</b>	<b>7</b>
<b>6. RULES FOR SAFE OPERATION .....</b>	<b>8</b>
<b>7. TRANSPORT, INSTALLATION AND CONNECTION.....</b>	<b>8</b>
7.1 TRANSPORT .....	8
7.2 INSTALLATION .....	8
7.3 CONNECTION .....	9
<b>8. DRAWING OF MAXIMUM DIMENSIONS .....</b>	<b>10</b>
<b>9. FUNCTION DESCRIPTION .....</b>	<b>10</b>
9.1 PARTS OF THE APPLIANCE.....	10
9.2 BEFORE FIRST USE .....	11
9.3 OPERATION INSTRUCTIONS.....	11
<b>10. HYGIENE AND CLEANING.....</b>	<b>12</b>
10.1 CLEANING GUIDELINE.....	12
<b>11. WHEN YOU ARE NOT USING THE APPLIANCE.....</b>	<b>13</b>
11.1 PACKAGING – STORAGE – RECYCLING .....	13
<b>12. MALFUNCTIONS AND SOLUTIONS .....</b>	<b>14</b>
<b>13. TECHNICAL CHARACTERISTICS.....</b>	<b>15</b>
<b>14. SPARE PARTS.....</b>	<b>16</b>
14.1 EXPLODED VIEW .....	16
14.2 TABLE OF PARTS.....	17
<b>15. ELECTRICAL DRAWING .....</b>	<b>18</b>

## 1. INTRODUCTION

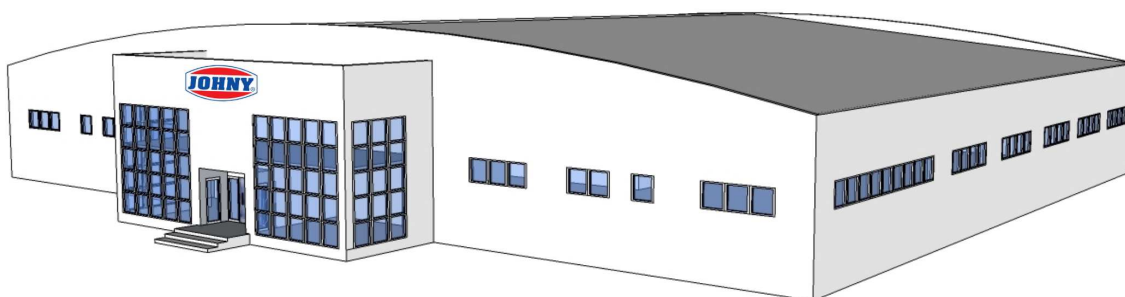
### 1.1 GENERAL

The company "**JOHNY - KIOSIDIS PRIVATE COMPANY P.C.**" was founded in 1993 as a sole proprietorship in continuation of the previous company, in which Mr. I. Kiosidis participated and which had been operating since 1982, with a similar objective.

Basic objective of the new company is to provide customers with a complete line of professional appliances for bars that meet the high European standards as well as the requirements of today's professionals.

In 2004, the company moved to new owned facilities (2,000 m<sup>2</sup>) at the 16<sup>th</sup> km of the road Thessaloniki - Serres, close to the centre of Thessaloniki, where it now operates as

**"JOHNY - KIOSIDIS PRIVATE COMPANY P.C."**



Since the company "**JOHNY - KIOSIDIS PRIVATE COMPANY P.C.**" started its activities, it has aimed at constant improvement:

- of the manufacturing quality,
- of the simplicity of operation,
- of the high performance of its appliances and mainly
- of safety.

Our numerous customers realized that and, just like you, responded positively to our endeavors and put their trust in our products. Always aiming for perfection in order to serve our customers and in accordance to the European orientation of our country, we are having our appliances certified for compliance with the European directives **(LVD) Low Voltage 2014/35/EU, (EMC) Electromagnetic Compatibility 2014/30/EU, (RoHS) Restriction of Hazardous Substances 2015/863/EU amending 2011/65/EU**

*For the end user this means even greater safety.*

We hope to continue our collaboration in the future, with responsible operation on your part and continuous efforts for improvement on ours.

### 1.2 PRODUCTS

Products manufactured by the company:

- Drink mixers
- Orange squeezers
- Blenders

---

**Hovoli AK/8-5**

---

- Hovoli for the preparation of traditional Cezve/Ibrik coffee on the sand
- Appliances for the preparation of hot dogs (steamer, boiler, roller)
- Conveyor belt toasters
- Ice crushers
- Chocolate machines

## **2. SAFETY REGULATIONS AND GENERAL INSTRUCTIONS. GENERAL OBSERVATIONS**

In assembling and choosing the parts of this equipment we have done our best to improve your work.

However, prudence is irreplaceable and the best regulation is the one that prevents an accident from happening.

## **3. MARKING**

The term **marking** refers to all indications or labels used for the identification of the type of appliance or part, which are attached by the manufacturer of the appliance or the part.

All equipment has been manufactured in accordance with safety measures in order to ensure the protection of the operator. However, there are still risks, which are stated on the appliance with the appropriate labels. These labels that are presented below indicate the different hazardous situations.



Keep the labels clean and replace them **immediately** if they are detached or damaged.

### **A) MANUFACTURER'S & TECHNICAL CHARACTERISTICS LABEL**

The manufacturer's plate is prominently displayed on the appliance and contains all the manufacturer's data as well as the technical characteristics of the appliance.

	<b>KIOSIDIS PRIVATE COMPANY P.C.</b>	
	16 km Thessaloniki-Serres, 57200 Liti	
		Thessaloniki, Greece
<b>HOVOLI AK/8-5</b>		
<b>AC220-240V 50/60Hz 600W</b>		

---

**Hovoli AK/8-5**

---

**B) HAZARD IDENTIFICATION LABELS**

These labels are prominently displayed, in order to be clearly visible and easy to read. It is recommended the labels to be placed near the areas that present the remaining hazards, which could not be excluded or significantly limited during the designing stage, for instance near hot surfaces or live parts. If the labels are lost or destroyed, they should be replaced immediately.



This plate is placed at the bottom part of Hovoli (base)



This plate is placed on the body of Hovoli

**4. SYMBOLS USED**

This safety symbol is followed by a message regarding the hazards that should be taken into consideration in order to prevent accidents.



This symbol is followed by a message about information stated in this or an accompanying user manual that should be taken into consideration by the user.



This symbol is followed by an indication.

When you come across the above mentioned labels, you need to be cautious of accidents or important information regarding the operation of the machine and you need to read carefully the message that follows.

Hovoli AK/8-5

---

## 5. GET TO KNOW THE APPLIANCE

This manual contains user and maintenance instructions for the hovoli by the company "JOHNY - KIOSIDIS PRIVATE COMPANY P.C.". Read the following instructions carefully, before you use the hovoli. It includes the declaration of conformity with the European safety standards. **The company does not bear any responsibility for accidents or damages that are caused due to negligence or non-compliance with the instructions contained in this manual.** Moreover, the company does not bear any responsibility for damages that are caused due to the misuse of the machine.

For any repairs or checks that require the performance of complicated procedures, you need to contact authorized service centers with qualified personnel or contact the company "JOHNY - KIOSIDIS PRIVATE COMPANY P.C." directly, as it is always at your disposal and can offer you quick and thorough technical support. You must read the contents of the labels attached on the hovoli carefully, so as to avoid damages that could jeopardize the integrity of the user and cause hazardous situations.

We are certain that having taken all these into consideration it will be easier for you to use your new hovoli, which will last a lifetime, thus fully satisfying your demands. With the hovoli you can prepare your Cezve/Ibrik coffee in the traditional way in the sand enjoying the aroma.



**ATTENTION! This manual is an integral part of the hovoli and should remain with it through every move or resale. It should be kept in a safe place that is known to the responsible staff. The staff is responsible for keeping the manual safe and intact, so that they can consult it throughout the appliance's life. In case the manual is destroyed or lost, you should immediately request a new copy from the manufacturing company.**



Keep this manual at a suitable place close to the appliance and make its position known to all users.



Regardless of your previous experience, do not fail to read the manual. Spending a few minutes to read this manual will save you time and trouble and will spare you unnecessary expenditures.



Read carefully before moving on to the start up, use, maintenance or other interventions on the appliance and follow the instructions and the warnings given below.



Keep the labels on the appliance and replace the ones that are lost or illegible.

## Hovoli AK/8-5

---

**6. RULES FOR SAFE OPERATION**

**ATTENTION!** Failure to observe the following safety rules could result in an accident and possible injuries.

- The personnel that are responsible for the operation of the appliance need to be familiar with the relevant operating instructions and comply with them, as they appear in this manual.
- Do not allow children or people with disabilities to operate the appliance.
- The appliance should be placed on a dry surface, free from water and oils.
- Do not leave the appliance plugged in and unattended after the end of its use, if you wish to clean it or if it is damaged.
- Do not stretch the power supply cable and do not use excessive force when handling it.
- Do not use the appliance if it is damaged or if the power supply cable or the plug is damaged. Contact your supplier for more information.
- Do not trust the repair of your appliance to people who are not authorized by the manufacturing company. Contact your supplier for more information.
- Do not modify the appliance in any way.
- Use spare parts made only by the manufacturing company.
- Do not get the appliance wet with water or any other liquid.
- Do not replace the power supply cable yourselves.

**7. TRANSPORT, INSTALLATION AND CONNECTION****7.1 TRANSPORT**

The hovoli is transported assembled and packed in an appropriate packaging with the necessary guards, in order to avoid damages caused by its transport. The net weight of the appliance is 2,940 kg.



As soon as you receive the appliance, you need to check for any damages caused during transportation.

**7.2 INSTALLATION**

- The appliance needs to be placed on a stable, flat and smooth surface, such as a stable table or a bench, so that there is no risk of falling over during its installation or operation.
- The installation surface should be clean and dry, free from any water and oils.
- For the operation of the appliance, you need to make sure that there is an electrical installation that meets the requirements of the appliance (§13 see p. 16).
- The space should be of the required dimensions. There should be free space around the appliance so that nothing obstructs the power supply, the operation and the maintenance of the appliance.



---

**Hovoli AK/8-5**

---

- Power supply is achieved through a plug (grounded Schuko plug) that is designed to be inserted in a stable socket. **It is recommended that you do not use an extension cable for the power supply cable.**

- For the operation of the appliance, you need to make sure that there is an electrical installation that meets the requirements of the appliance.



**ATTENTION!** Both the plug and the socket need to be grounded. The appliance is a Class I appliance and thus protection against electrocution depends on the grounding of the live parts.



**ATTENTION!** The voltage of the main electrical circuit must be compatible with the voltage stated on the plate of the appliance.



**ATTENTION!** Protect the power cable from possible damages.

Before the installation you should take the following information into consideration:

- Initial inspection of the voltage and the required power of the main connection of the appliance,

- Fuse 7A.

In the installation area there should be:

- A power socket with the following characteristics: Voltage 220-240V, frequency 50/60 Hz.

### **7.3 CONNECTION**

The appliance needs to be connected in the power grid. At the end of the power cord there is a plug that needs to be connected with a socket that has similar features (220-240 V, 50/60 Hz).



**ATTENTION!** For your own safety, before you connect the appliance with the electrical power supply line, you need to check whether:

- The plug is damaged.
- The voltage and the frequency of the operation of the appliance are compatible with the features of the power grid.

## Hovoli AK/8-5

## 8. DRAWING OF MAXIMUM DIMENSIONS

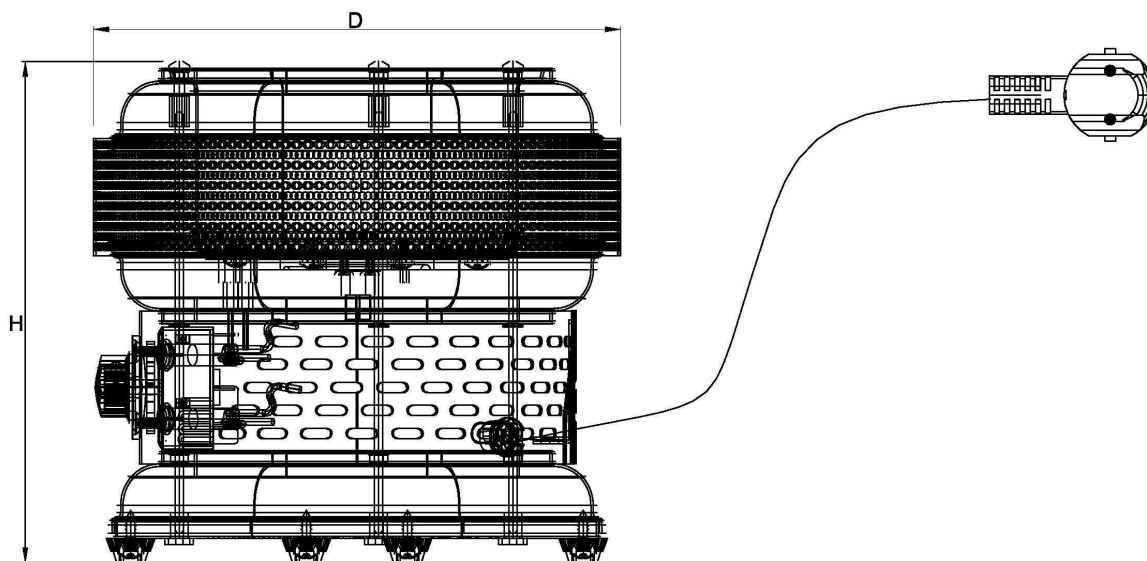


Figure 1: Drawing of maximum dimensions

Maximum Dimensions (mm)	
Diameter (D)	210 mm
Height(H)	195 mm

## 9. FUNCTION DESCRIPTION

### 9.1 PARTS OF THE APPLIANCE

The hovoli is intended for household or similar use such as:

- Kitchen staff in shops, offices and other working environments
- Rural houses
- Clients in hotels, motels and other accommodation
- In hospitality Bed and Breakfast

Using the Hovoli you can prepare your Cezve/Ibrik coffee in the traditional way in the sand enjoying the aroma. Its operation is simple. A resistance heats the sand inside the bowl, where the coffee pot is placed. With the temperature acquired by the sand, the Cezve/Ibrik coffee is cooked with the most traditional way onto the sand. Preparing Cezve/Ibrik coffee on the hovoli in a required time, makes it the most delicious, most aromatic, in combination with the correct blend, which is achieved by roasting the coffee with traditional way on the Hovoli.

## Hovoli AK/8-5

The Hovoli consists of the following parts:

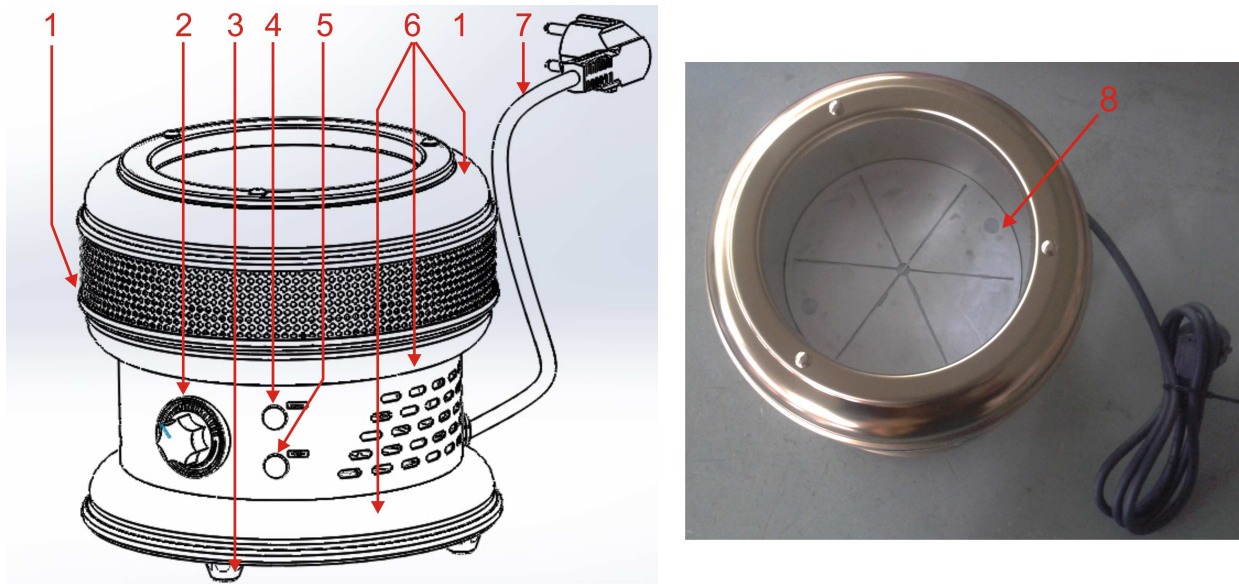


Figure 2: Parts of the appliance

- |                                 |                         |
|---------------------------------|-------------------------|
| 1. Perforated ring              | 5. Heating element lamp |
| 2. Switch temperature regulator | 6. Ring                 |
| 3. Rubber feet                  | 7. Power cord           |
| 4. Indicating lamp              | 8. Thermal resistance   |



**ATTENTION!** After a power failure while the appliance is in operation, you need to turn the switch temperature regulator counter clockwise and disconnect from the socket.

### 9.2 BEFORE FIRST USE

Before the operator uses the appliance for the first time, he must do the following:

- Get to know the appliance and its components.
- Check the stability of the appliance.

### 9.3 OPERATION INSTRUCTIONS



**ATTENTION!** Make sure that the plug is connected.

After placing the Hovoli on the selected area, follow the instructions below to turn on the appliance:

- Open the bag containing the sand and spread it evenly on the heating plate (8 Figure 2).
- Connect the power cord to the socket (7 figure 2).
- Turn the switch temperature regulator clockwise till the end of the graduations (2 Figure 2).

## Hovoli AK/8-5

- Ensure that both lamps for the power and the heating element switch on (**4 & 5 Figure 2**).
- You should wait for 15 minutes till the appliance reaches the required temperature. When the appliance reaches the required temperature (300°C), then the lamp of the heating element switches on and off periodically (**if stays on continuously, refer to the "malfunctions and how to troubleshoot"**). The power indicating lamp remains continuously on.
- If the appliance has reached the required temperature, place on the sand the pot after filling it with water and the necessary ingredients (coffee, sugar) and **immerse deep into the sand so as to touch onto the heating plate**. Move the pot in small circular movements in the sand. Stir coffee and be careful because cezve/ibrik coffee inflates and can be poured. **The coffee will be ready in 2,5-3 min.**
- When coffee is ready is served. The appliance can remain plugged in with the switch temperature regulator turned at the end of the graduations, in order to prepare more coffees during the day.
- In order to switch off the appliance at the end of the day, turn the switch temperature regulator counter clockwise till the end of the graduations. The power indicating lamp will switch off. Now you can disconnect the appliance from the power socket.



**ATTENTION! During operation the external surface of the appliance is hot. DO NOT TOUCH THE APPLIANCE.**



**ATTENTION! The sand remains hot for many hours after switching off the appliance. DO NOT TOUCH THE SAND.**



**ATTENTION! DO NOT USE THE HOVOLI WITH WET HANDS**



The appliance should be operated by specialized and trained personnel and not under the influence of alcohol or drugs.



The switch temperature regulator is not recommended to be placed in the middle of the graduations (medium temperature), because the sand will not obtain the desired temperature and the coffee will not be prepared. Only in case of maintenance and when not using the appliance, you can turn the switch to the middle of the graduations.

## 10. HYGIENE AND CLEANING



**ATTENTION!** Cleaning should be performed when the appliance is turned off and unplugged.

### 10.1 CLEANING GUIDELINE

- The appliance should be turned off, unplugged and should not be hot.

---

**Hovoli AK/8-5**

---

- Pour water on a damp cloth and drain well and wipe gently Hovoli externally to clean any coffee residues.
- If the sand is dirty, replace it with new sand. Turn the appliance off and carefully pour the dirty sand into a bag.

Ensure the daily cleaning of the appliance.



**ATTENTION!** Never try to repair the appliance by yourselves. Contact authorized personnel, your dealer or directly the manufacturer.



**ATTENTION!** Do not replace the power cord by yourselves. If the power cord is damaged, you should contact trained personnel, your dealer or directly the manufacturer, in order to prevent the **risk of electrocution**.



**ATTENTION!** Do not try to clean, service or repair the appliance while it is in operation.



**ATTENTION!** Do not get the appliance wet with water or any other liquid.



At the end of each working day switch off the appliance by turning the switch temperature regulator counter clockwise till the end of the graduations and disconnect from the power socket.

## **11. WHEN YOU ARE NOT USING THE APPLIANCE**

### **11.1 PACKAGING – STORAGE – RECYCLING**

When the appliance is not used for a long period of time you need to:

- Service it in accordance with the maintenance instructions.
- Pack it properly, in order to prevent dirt and moisture from entering the appliance.
- Before you start using it again, you need to check and clean the appliance.

For any doubts or question, contact your supplier directly. Even after the expiry of the warranty we will always be willing to help you and give you the best advice regarding your appliance. Do not assign the service or repair of your appliance to unqualified people and more importantly do not attempt to do these tasks yourself, if you lack the necessary knowledge.

**Hovoli AK/8-5**


When the appliance is withdrawn from service, it is recommended that you contact a company that is involved in the recycling of materials. This company will disassemble the appliance and forward the parts to the most suitable sites for their recycling or storage.



**Directive 2012/19/EC**

**12. MALFUNCTIONS AND SOLUTIONS**

Possible malfunctions and their solutions are described in this paragraph. If a problem that is not stated below arises, contact the supplying company.

As part of our efforts to constantly improve our services and cooperate with our consumers, we would like to ask you to contact us in case there is an issue not included in the following table.

<b>Problem</b>	<b>Possible Cause</b>	<b>Troubleshooting</b>
The appliance is not working	The power cord is not connected to the socket	<ul style="list-style-type: none"> <li>• Connect the appliance to a socket that has the same voltage as the appliance</li> </ul>
The heating element lamp remains constantly on	There is damage to the appliance or the heating element.	<ul style="list-style-type: none"> <li>• Turn the switch temperature regulator counter clockwise till the end of the graduations and disconnect from the power socket.</li> <li>• Contact your dealer, trained personnel, or the manufacturer.</li> </ul>
The indicating lamp does not light.	The power cord is not connected to the socket The lamp has burned The switch temperature regulator has problem	<ul style="list-style-type: none"> <li>• Connect the appliance to a socket that has the same voltage as the appliance</li> <li>• Replace the lamp</li> <li>• Check the operation of the switch temperature regulator.</li> </ul>



Hovoli AK/8-5

---

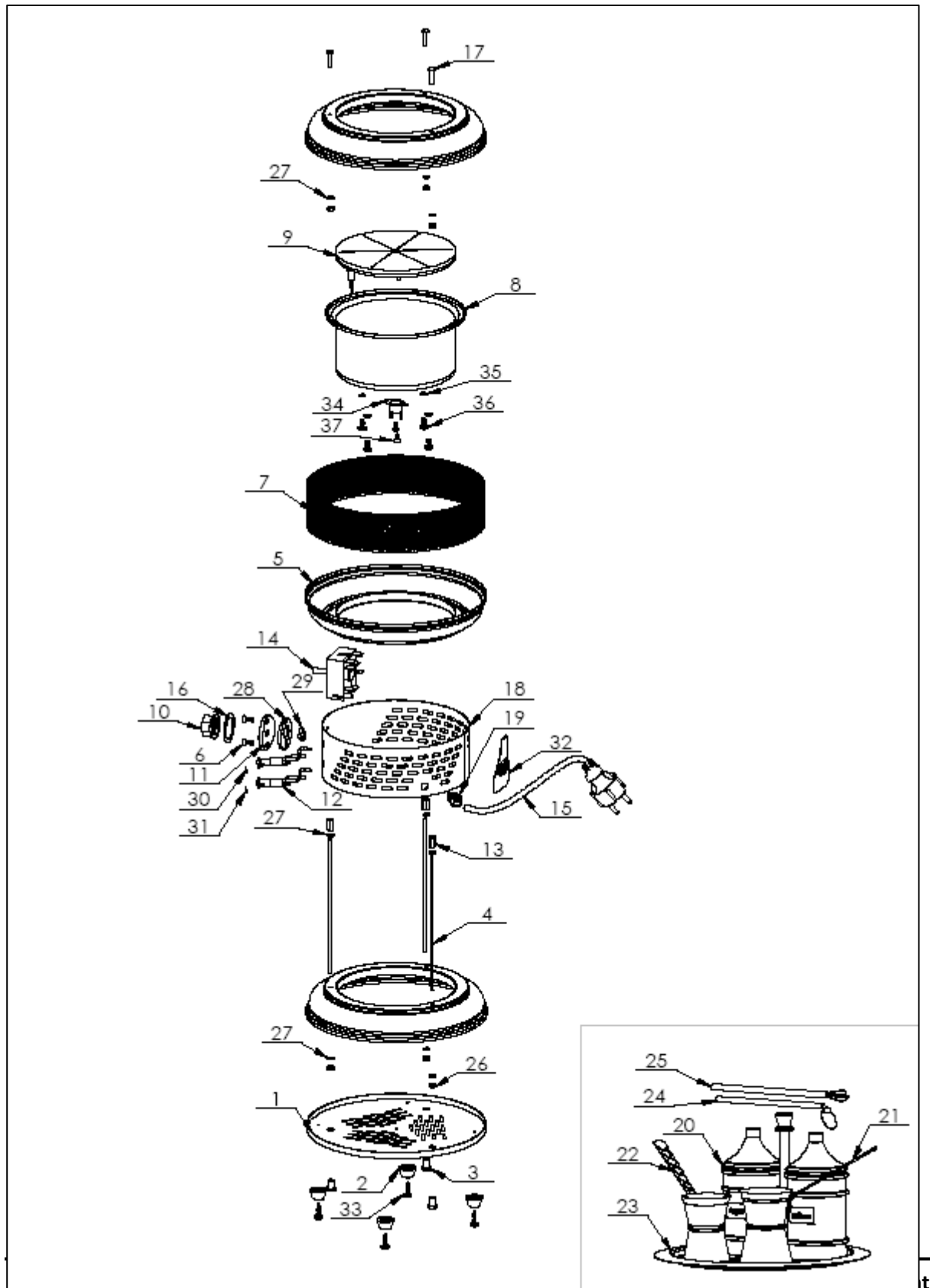
13. TECHNICAL CHARACTERISTICS

Technical characteristics of the Hovoli AK/8-5	
Power	600 W
Operating voltage	220-240V
Operating frequency	50/60 Hz
Net weight	2,940 Kg
Gross weight	3,340 Kg
Dimensions (mm)	L210 W210 H195
Operating temperature	300°C~

Hovoli AK/8-5

14. SPARE PARTS

14.1 EXPLODED VIEW







## Hovoli AK/8-5

## 14.2 TABLE OF PARTS

A/A	DESCRIPTION	QUANTITY (pcs)
1	BASE	1
2	RUBBER FEET	4
3	NUT M4X10	3
4	STUD M4	3
5	INOX RING	3
5	GOLD RING	3
6	SCREW M4X12	2
7	PERFORATED RING	1
8	BOWL $\Phi$ 140mm INOX	1
9	THERMAL RESISTANCE	1
10	SWITCH TEMPERATURE REGULATOR	1
11	ROSETTE CHROME	1
11	ROSETTE GOLD	1
12	INDICATING LAMP	2
13	NUT M4X12	3
14	THERMOSTAT	1
15	POWER CORD	1
16	THERMOSTAT WITH GRADUATIONS	1
17	SCREW M4 D8	3
18	BODY INOX	1
18	BODY GOLD	1
19	CABLE ATTACHEMENT	1
26	NUT M4	6
27	WASHER $\Phi$ 4	11
28	THERMOSTAT ROSETTE	1
29	THERMOSTAT ROSETTE STOP	1
30	POWER STICKER	1
31	RESISTANCE STICKER	1
32	FRONT STICKER	1
33	SCREW M4.2X13	5
34	THERMAL SWITCH	1
35	WASHER $\Phi$ 5	4
36	SCREW M4.2X9.5	5
37	SCREW M3.5X9.5	2

## Hovoli AK/8-5

## 15. ELECTRICAL DRAWING

